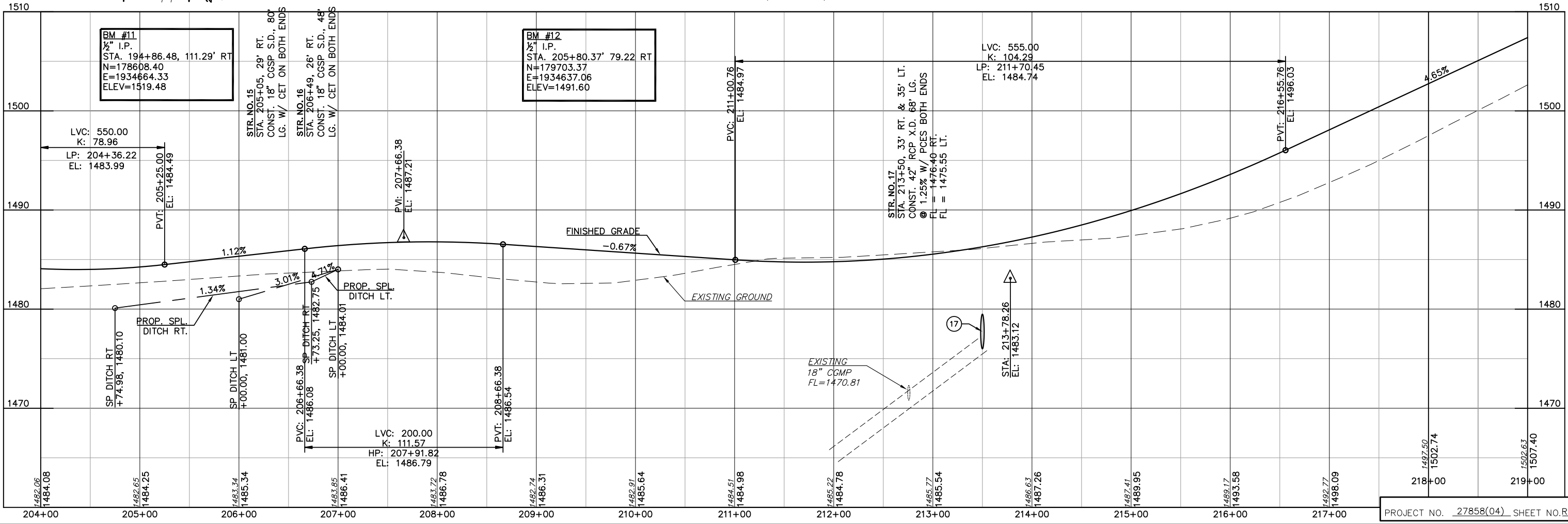
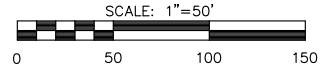
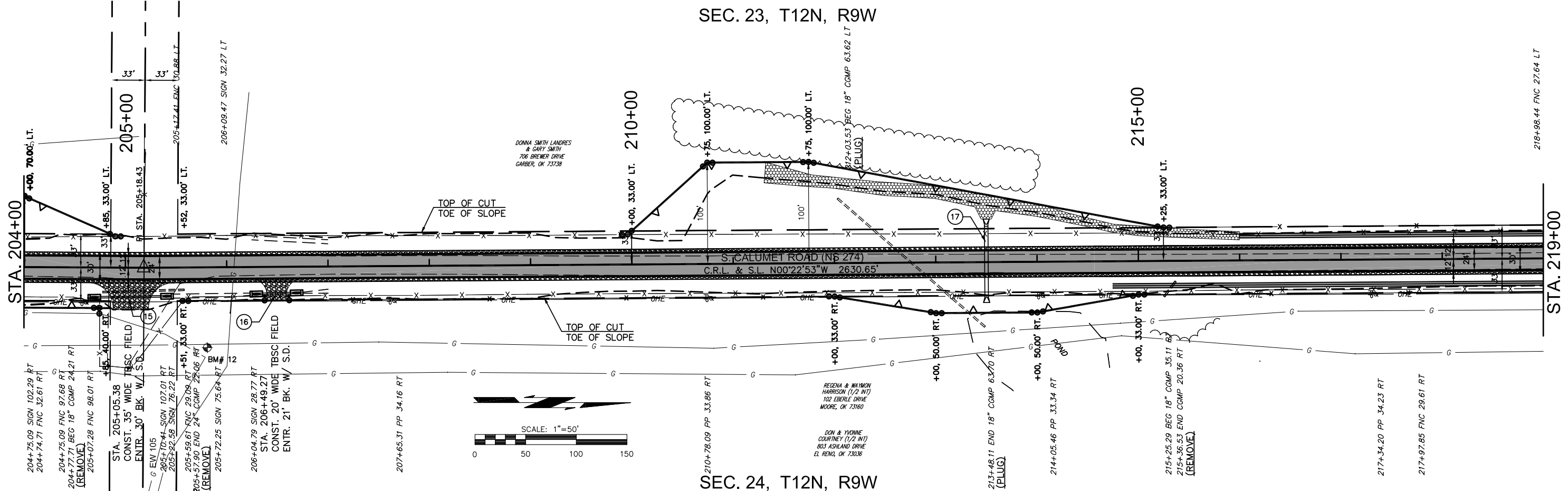


SEC. 23, T12N, R9W

SEC. 24, T12N, R9W



**BM #11**  
 1/2" I.P.  
 STA. 194+86.48, 111.29' RT  
 N=178608.40  
 E=1934664.33  
 ELEV=1519.48

**BM #12**  
 1/2" I.P.  
 STA. 205+80.37 79.22 RT  
 N=179703.37  
 E=1934637.06  
 ELEV=1491.60

PLOTED: Tuesday, September 05, 2017 @ 03:55PM  
 N:\1454-Calumet-Ed-Corridor-County\Drawings\1454SP.dwg